

SHARP®

HIGH-SPEED WORKGROUP COLOR DOCUMENT SYSTEMS

OPTIMAL PERFORMANCE. UNMATCHED QUALITY. TRUE MULTI-TASKING.



MX-5500N
MX-6200N
MX-7000N



"IT Friendliness"
Award
2005



"Most Secure MFP"
Award
2006



"Outstanding MFP
Security Solution"
2006



"Innovation"
Award
2006



THE RENAISSANCE OF COLOR

MX-5500N/MX-6200N/MX-7000N

THE PERFORMANCE, RELIABILITY AND VERSATILITY LARGE WORKGROUPS EXPECT— WITH BRILLIANT HIGH-IMPACT COLOR

Designed for incredible versatility, Sharp's MX-5500N, MX-6200N and MX-7000N High Speed Workgroup Color Document Systems can easily handle the diverse needs of today's busy workgroups. With the ability to print both high-quality color and B&W, you get more function and power for large-volume tasks. These powerful 1 GHz performers deliver best-in-class features across the board—from copying, printing, scanning and emailing to faxing and storing your files. The MX Series also offers high-volume paper handling capabilities with an array of optional finishing features that help make a great impression as well as save time and labor. But there's more. The MX Series offers the latest innovation with Sharp's **Open Systems Architecture** (Sharp OSA). Designed to boost productivity, Sharp OSA gives you one-touch access to your business applications right from the LCD display, offering a new realm of control and convenience. Unmatched features such as a large, color LCD display with customizable "short cut" keys, and comprehensive software utilities make these sophisticated systems easy to operate. And for unparalleled security, Sharp's Security offerings protect your data by securing walk-up, scan and network access. With six levels of device protection, Sharp can help keep your documents safe—and your business ahead of regulatory compliance.





EXCEPTIONAL FEATURES FOR HIGH-VOLUME ENVIRONMENTS

Productive

Versatile

User-Friendly

Adaptable

Secure

- Performance-driven **1 GHz Multi-tasking Color Document System** with **optional EFI controller** to match your environment
- Versatile application integration with Sharp's **Open Systems Architecture** enables users to access network applications right from the LCD panel
- Sharp's award-winning **multi-level document** and security offerings
- Integrated **LDAP and User Authentication** for secure access
- Customizable icon-driven **color touch-screen display**
- **One-touch ImageSEND™** facilitates scans to USB devices, network folders, email and more
- Standard **150-sheet Duplexing Document Feeder** with **Color Scan²**
- Large **6,600-sheet** maximum on-board paper supply (3,100 standard)
- Efficient **Cardshot, Page Stamp** and **Tandem Copy**
- Built-in **PCL6/PCL5c printing** with Direct Print and PostScript 3 option
- Standard **80 GB HDD** allows spooling and greater Document Filing
- Advanced **web-based Device Management** and on-board user manuals
- Optional **external keyboard** for enhanced convenience
- Environmentally focused; **Energy Star®** and **RoHS compliant**
- Optional **Finishing, Page Inserter** and **Hole-punch** accessories to reduce paper handling and increase productivity
- A choice of **large-capacity paper trays** for high-volume workgroups
- Optimized Fax option includes **PC Faxing** and **Inbound Routing**
- **My Sharp** web-based 24/7 training

PRODUCTIVITY-ENHANCING FEATURES



JUMP-START YOUR WORKFLOW WITH POWERFUL FEATURES AND SUPERIOR FLEXIBILITY

IMPRESSIVE PERFORMANCE

Designed for large workgroups, the new MX Series delivers lightning-fast output, so your workflow keeps moving. At 55/62/70-ppm in B&W and a speedy 41-ppm Color, these advanced performers don't miss a beat. With a **standard paper capacity of 3,100 sheets** (upgradable to 6,600 sheets) and a standard **150-sheet duplex single pass document feeder**, the MX Series can tackle large-scale projects with incredible efficiency. For high-volume workgroups, you can add the **3,000 or 3,500-sheet large capacity tray**, available in either tabloid or letter-only models. The MX Series makes it easy to produce booklets, proposals and presentations with **trayless duplexing**, **electronic sorting** and **integrated offset stacking**. Sharp's new **multi-tasking controller** is at the heart of it all. With blazing speed and processing power, you can get your jobs done in record time.



A 6,600-sheet online paper capacity is available with options.

DOUBLE YOUR PRODUCTIVITY WITH COLOR SCAN²

For optimum productivity, the new MX Series offer Sharp's award-winning **Color Scan² technology**. With simultaneous scanning of 2-sided documents, these powerful workhorses speed through duplexed originals in an instant. And since the document is scanned in a single pass, it takes half the time to process. Now it's faster and easier than ever to duplicate new employee booklets, company newsletters—virtually anything your business needs to communicate—quickly and easily.



EXTERNAL KEYBOARD OPTION FOR ENHANCED INTERACTION

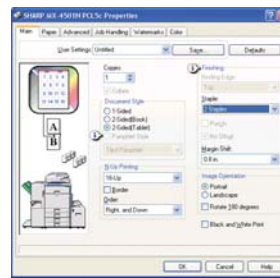
If your workgroup performs a significant amount of data entry at the LCD, you can easily add the **optional external keyboard** for more convenience. Ideal for environments that handle repetitive scanning and archiving of documents, a keyboard can speed up the process and save time.

MORE-THAN-ROBUST DOCUMENT FILING

For even more efficiency, MX-5500N/MX-6200N/MX-7200N document systems offer convenient **Document Filing**. Now you can standardize and store frequently used files such as fax cover sheets, distribution order forms, HR forms, and more. With **30 GB of document storage capacity**, everyone can easily recall and share documents. In confidential environments, you can restrict access to select users. With private storage features, PIN-code access, and **My Folders**, your document security is never compromised. And with Sharp's new **Quick Folders**, you can temporarily store and retrieve documents quickly and easily. Plus, an advanced backup system ensures that your files are safe and secure.

OUT-OF-THE-BOX NETWORK PRINTING

With simple plug and play operation, the MX Series offer **600 x 600 dpi B&W and Color printing** right from your desktop. With advanced features including cover page printing, overlay print and pamphlet mode, your documents will rival those from professional printers. Plus, you control the production, so scheduling is never an issue. The **watermark feature** provides the ability to number the pages as you make copies, so referencing



multiple-page documents is quick and easy. You can even save your preferences for fast recall. And with the **optional Postscript driver**, you get extensive color control options, as well as convenient PDF printing, which allows you to print a PDF without even opening the file. Just send the PDF to the printer. It's that simple.

EFFICIENT CARDSHOT FEATURE

For speedy processing in healthcare and insurance environments, the convenient **Cardshot** feature saves time and resources by copying both sides of a license or ID card onto a single sheet of paper.

USER-FRIENDLY COLOR LCD DISPLAY

The unique **Customizable User Interface** allows the touch-screen to display three virtual "short-cut" keys that can be customized to provide instant access to the features that you use most often. Save valuable time and eliminate browsing through layers of menus to select features that you use regularly. These "short-cut" keys can also be customized so that different users see different "short-cuts" based on their specific needs. It is even possible to have the interface display different languages based on the user's login. Plus the color LCD touch-screen display makes the MX Series easy to operate, even for occasional users. With an extra large **10.4-inch color screen**, the intuitive, icon-driven graphics provide easy access to advanced features.



The larger, 10.4" Color LCD touch-screen display is intuitive and easy to use. New customizable "short-cut" keys recall frequently used documents or settings in a flash.

HIGH-IMPACT, HIGH-VOLUME FEATURES

BEST-IN-CLASS IMAGE QUALITY

Sharpen your business communications with detailed B&W images and **brilliant, dazzling color**. The MX Series can easily handle the demands of both B&W and color. Eliminate the need for separate systems and reduce office hardware and associated costs with these multi-tasking performers. Easily generate dynamic proposals, presentations and newsletters that get noticed and make a statement. With Sharp's **micro-fine toner technology** and **Image Stabilizing System**, color is consistent from the first page to the last, so you always make a good impression.

PROFESSIONAL-QUALITY FINISHING

The MX Series offers several modular finishing options to automate paper handling as well as give your documents a professional appearance. Presentations, new employee welcome kits and customized sales and marketing collateral can be easily printed and finished in-house. The optional **4,000-Sheet Finisher** speeds through large projects, giving you complete control over deadlines. The robust **Saddle-Stitch Finisher** option delivers **3-position stapling, center folding, 50-sheet stapling capacity**, and more. To add flair and organization to your jobs, you can insert covers, tabs or special media with the **Post-Sheet Inserter**. For even more versatility, add the hole-punch unit for two- and three-hole punching.



MX-FNX3
4,000-sheet Finisher



MX-FNX4
4,000-sheet
Saddle-Stitch Finisher

A choice in finishers with optional hole-punching and inserting makes it easy to reduce costs on professional printing and finishing.



ECO-FRIENDLY TECHNOLOGY

Sharp's new **micro-fine toners** offer a lower consumption rate than conventional toners, resulting in less packaging material and longer replacement intervals. Environmentally-conscious managers will appreciate that the MX Series is **RoHS compliant** and has the **Energy Star certification**. In fact, the power consumption of the



MX Series is among the lowest in the industry and supports modes to reduce or shut off power when directed.

In addition to being environmentally friendly, the front-loading color-coded toner cartridges are easy to replace. You can even change the black toner cartridge while the system is running.



MX-LCX2
3,500-sheet
Large Capacity Tray



MX-LCX3
3,000-sheet
Large Capacity Tray

Select from two large capacity trays: The MX-LCX2 holds 3,500 sheets of letter-sized paper. The MX-LCX3 accommodates 3,000 sheets and adjusts to letter-R, legal, or tabloid-sized papers.

ADVANCED DOCUMENT SECURITY PROTECTS YOUR ASSETS



"Most Secure MFP"
Award

DATA SECURITY



"Outstanding MFP
Security Solution"

To help protect your data, the MX Series offers several layers of security, making Sharp the optimum choice to protect employee privacy and intellectual property. As the leader in office equipment security, Sharp makes it easy for any business or government entity to safely deploy digital copying, printing, scanning and faxing.



AUTHORITY GROUPS

Advanced account management enables administrators to set authority groups for access to features of the MX Series. Administrators can control which department, for instance, has full access to copying, printing, scanning and/or fax. Walk up users enter a code, Local Name and Password, or LDAP User Authentication to access their features assigned to their group.



DOCUMENTS REMAIN CONFIDENTIAL

To protect your printed documents from unauthorized viewing, the MX Series offers encrypted PDF files for printing and scanning as well as confidential printing that requires users to enter a PIN code in order to print a queued document. Additionally, Secure Fax Release ensures received fax documents are held in memory until an authorized user enters a PIN code. So compliance with healthcare regulations like HIPAA is easier.



NETWORK SCANNING ACCESS

To protect your network from unauthorized email communications, the MX Series supports SMTPS, POP3S, FTPS and user authentication, requiring users to login before performing any network scanning operations.



CONTROL DEVICE ACCESS OVER THE NETWORK

To restrict access to the device over the network, the MX Series offers Secure Socket Layer (SSL Encryption), Digital Certification, SNMP (v3), IP/MAC address filtering, protocol enable/disable and port management for maximum security.



DATA ERASE AND ENCRYPTION

To protect your data, the MX Series offers an optional data security kit that encrypts document data using 128-bit encryption. Additionally, the data security kit erases the temporary memory on the hard drive by overwriting the encrypted data up to seven times, offering an unprecedented level of assurance.



TRACKING AND AUDITING INFORMATION

Legislation and industry policies require companies to be more aware of information flow from their offices. Sharp offers both built-in and additional hardware/software which allows users to control, access and track usage of each device on the network.

These scalable security offerings aim to protect your intellectual property, preserve confidential information and help your business to meet regulatory requirements, such as the Health Insurance Portability and Accountability Act (HIPAA), and the Gramm Leach Bliley Act (GLB). For additional information visit: www.sharppusa.com/security

VERSATILE SCALABILITY

IMAGINE THE POSSIBILITIES

GET MORE OUT OF YOUR BUSINESS APPLICATIONS

The MX Series provides powerful functionality for your business so you can immediately leverage your previous investments in data management infrastructure. While others are limited to a small circle of productivity, Sharp's newest innovation, **Sharp Open Systems Architecture** (Sharp OSA) allows users to leverage the power of their back-end systems **right from the control panel**. It's really a new way of thinking with "*power at the panel*" for automation of tasks and a streamlined workflow.

You'll save time and increase the efficiency of everyday tasks with Sharp OSA because it can be virtually seamless to the user. Any MX Series anywhere in the organization can display choices that were once only available on a desktop PC. With one-touch access to business applications via Sharp OSA, you can start and finish a document distribution task without worry.

Sharp OSA is the logical choice as a complement to your existing infrastructure because the MX Series becomes the gateway to providing fast, flexible access to documents and applications... no matter where you are in the office. You also get the controlled access and tracking capability you require with tighter integration capabilities for network security and accounting applications. With such comprehensive control, you'll be able to manage your document workflow easily, efficiently, and more securely.

Sharp OSA also provides another crucial component to your workflow: customization. With the ability to personalize applications and processes specific to your business, Sharp OSA can eliminate redundancy and streamline workflow, helping to save time and optimize productivity. And since Sharp OSA utilizes industry-standard network protocols such as SOAP, XML, and XHTML, third-party software developers can deliver customized solutions to your business faster than ever.

SHARP OSA AT A GLANCE

- Automate tasks and save time with seamless integration between the MX Series and network applications
- Centralized applications minimize set-up and installation on multiple Sharp products
- Eliminates repetitive tasks and streamlines workflow, increasing efficiency
- Maximize your return on investment with tighter integration among IT assets
- Industry standard programming leads to faster deployment of new solutions

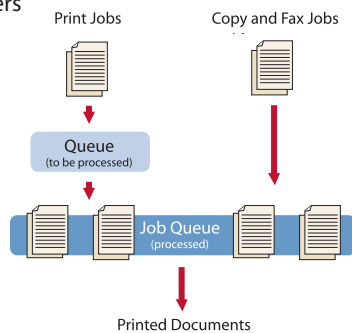


DOCUMENT WORKFLOW & DISTRIBUTION

STREAMLINE YOUR WORKFLOW WITH ADVANCED DISTRIBUTION FEATURES

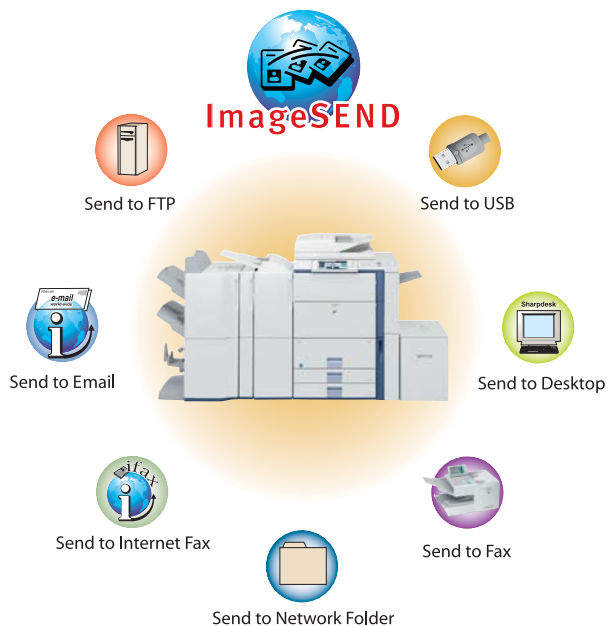
TRUE MULTI-TASKING WITH DUAL PROCESSING

The new MX Series features a **high-performance, 1 GHz multi-tasking controller** that delivers copy, fax and print jobs continuously for optimum efficiency. Other controllers only perform one operation at a time. But the MX Series continually processes incoming jobs even while existing jobs are output. The result? A workflow that never slows down—even at crunch time.



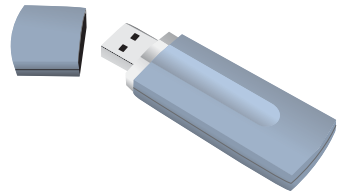
INTEGRATED NETWORK SCANNING

With Sharp's powerful **ImageSend** technology, you get one-touch distribution features that centralize document workflow, reduce mail costs and save time. With up to **seven destinations**—Email (SMTPS), Desktop, FTP, FTPS, Network Folder (SMB), USB, Fax and internet Fax—getting your document where it needs to go is as easy as pushing a button. High-volume workgroups will appreciate the **Send to Group** mode that allows you to mix group broadcasts to Email, Fax, and Internet Fax for increased efficiency.*



CONVENIENT USB SUPPORT

The MX Series also supports popular USB memory devices for today's on-the-go professionals. Scan files directly to a USB device, or simply plug in and print directly without creating network traffic by copying files. Most popular industry-standard file formats are supported, including TIFF, JPEG, PDF, and Encrypted PDF.*



SECURITY AT YOUR FINGERTIPS

Get the control and security you need to minimize risk in today's changing office environment. The MX Series supports **LDAP** with integrated **User Authentication**. Workgroups can set up rights to features and functions, providing unprecedented control over usage and costs. With controls for up to three levels of identification, you can protect sensitive documents from being scanned, faxed or emailed—so your data is never compromised.

CONVENIENT AND SECURE EMAIL DISTRIBUTION

With LDAP, there's no need to manually enter a recipient's complete email address. Simply enter the first few characters and the MX Series automatically searches and displays a list of matching names. It's efficient, and it's secure. And with the **Unique File Naming** feature, you can enter specific filenames with custom subject fields, so it's easier to recall files when you need them.

POWERFUL SUPER G3 FAXING

The optional **Super G3 Fax Kit** delivers lightning-fast faxing for busy workgroups. Integrated **PC Faxing** allows you to fax a document directly from your desktop. With the Finisher installed, you can collate, staple and/or copy inbound faxes, so they're ready to distribute, saving time. **Inbound Fax Routing** allows you to set parameters so that faxes can be sent directly to your email address, giving mobile users the ability to check on incoming orders, purchase orders, and more. Settings can be easily managed through the user-friendly web page. For additional savings, the optional B&W Internet Fax expansion kit can help reduce long-distance phone costs.



*Some destinations require optional equipment

INTEGRATED, USER-FRIENDLY SOFTWARE TO MANAGE DOCUMENT WORKFLOW



"IT Friendliness" Award

Despite the MX Series' sophisticated feature set, the systems are exceptionally easy to operate. To help you make the most of your investment, Sharp designed the Administration Utility Suite, a collection of easy-to-use tools that simplify functionality for both administrators and desktop users. This broad suite of tools delivers all the control you need from walk-up access to complex network management.

THE MX SERIES WEB PAGE: YOUR GATEWAY TO ACCESS

Manage advanced MX Series' features right from your desk with Sharp's easy-to-use **Secure (SSL) Web Page**. Administrators can set personalized scanning destinations, profiles, web-links, and fax distribution features. You'll also gain access to **My Sharp**, a customized website for on-demand training and support to help you maximize the features of your Sharp MFP.



SEE THE WHOLE PICTURE WITH PRINTER ADMINISTRATION UTILITY (PAU)

Designed to simplify administrator tasks, PAU allows you to view devices on the network, install features and distribute drivers over the network—all from a single interface. Monitor device usage for both B&W and Color jobs, set printing priorities or move jobs to different devices to expedite workflow.

CHECK IT OUT BEFORE YOU QUEUE WITH PRINTER STATUS MONITOR

Designed for both managers and desktop users, Printer Status Monitor allows you to view printer conditions, check paper levels, toner and more all through an easy-to-use interface. You can be notified when your large job is done right at your desktop.

ORGANIZE AND EDIT SCANNED FILES WITH SHARPEDESK™

With Sharpdesk document management software, you can easily and securely (using FTPS) integrate scanned documents into your everyday workflow. Organize, edit, and convert—even combine several scanned files into one document. Full text search capabilities are available so users can retrieve documents faster than ever.

MAXIMIZE PRODUCTIVITY WITH REMOTE EMAIL DIAGNOSTICS

Now managers can stay on top of device productivity. Key operators can automatically receive meter reads and specific diagnostic information about the MX Series at their desktops.



Embedded Web Page



Printer Administration Utility



Printer Status Monitor



Sharpdesk™



EXPANDED FUNCTIONALITY FOR GRAPHIC-INTENSIVE WORKGROUP ENVIRONMENTS

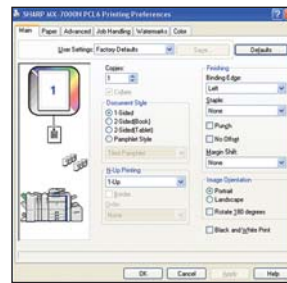
THE OPTIONAL FIERY CONTROLLER AND GRAPHIC ARTS PACKAGE

Specifically made for design firms, central reprographic departments, pre-press professionals and related applications, the optional Fiery Controller delivers state-of-the-art color control as well as several software tools that will streamline your workflow and enhance productivity. This comprehensive set of tools includes scalable, productivity-enhancing features that can grow with your business. With a blazing-fast **2.0 GHz processor**, the powerful Fiery controller accelerates the processing of memory-intensive files, minimizing document traffic and bottlenecks. Effortless to control, the Fiery option results in consistent, precise output for mission-critical applications—from the first page to the last.



INTUITIVE, EASY-TO-USE DESKTOP INTERFACE

The Fiery driver interface provides **efficient and organized access** to print functions and settings. Pop-up menu information displays convenient overview and sub-menu choices for each option, so navigation is simple. Integrated features like **Drag-and-Drop Watermark, Job Monitor** and **Booklet Maker** help you generate complex jobs without purchasing additional software, so you can perform sophisticated features quickly and easily.



SEAMLESS INTEGRATION WITH YOUR INFRASTRUCTURE

Designed to fit into any network, the Fiery controller provides an **intuitive and flexible platform** to manage the entire document printing process from a single interface. All standard network protocols are supported, simplifying installation and deployment. Plus, you'll get the advanced security features to manage various levels of user access. With **IP filtering, Port Blocking, Secure Erase options** and more, Fiery delivers advanced data protection to address growing security needs. And with Fiery **WebTools™**, users can access fast remote management of their jobs and devices via an easy-to-use web interface.



The Fiery interface features a simplified tabbed structure that is easy for both occasional users as well as the most demanding operators.

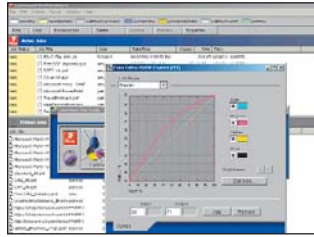
FIERY CONTROLLER ACCESSORIES

- Spot-On®
- EFI Hot Folders/Virtual Printers
- Auto Trapping
- EFI Impose™ Fiery Edition
- EFI Color Profiler
- PrintShop Mail-Fiery® Edition
- PageFlex Persona-Fiery® Edition
- EFI Secure Erase

THE TOOLS YOU NEED TO GET THE JOB DONE

COLORWISE®

Get accurate, consistent color across platforms, applications and all types of Media with EFI® Fiery ColorWise. With automatic, in-RIP processing, jobs are processed at the controller, not at the workstation, **resulting in improved workflow**. Simply set the parameters and ColorWise automatically applies these settings consistently to each job, regardless of the file type, application, or platform.



COLOR PROFILER (OPTIONAL)

Need to generate a corporate color that will print consistently on any device in the organization? The optional Color Profiler kit provides sophisticated tools to create printer profiles for every printer on your network, **eliminating the time spent making adjustments**. The Color Profiler kit **provides more realistic color** on CRT and LCD monitors as you prepare color documents for printing.



COMMAND WORKSTATION™ AND WEBTOOLS

Command Workstation offers a variety of tools that help **simplify centralized print management**. With extensive features, administrators can monitor devices and jobs, add, delete or re-order jobs to optimize workflow in busy workgroups. WebTools allows administrators or users to **remotely access features** via the internet to better manage jobs for greater efficiency.

FREEFORM™

Get the sophistication of variable data printing in a flexible, scalable, and easy-to-use interface. The industry's leading variable data printing solution, FreeForm enables you to **tap into one-to-one marketing**. Freeform works from practically any application, and is compatible with popular variable data printing software applications, offering an enhanced, cohesive workflow and improved productivity.

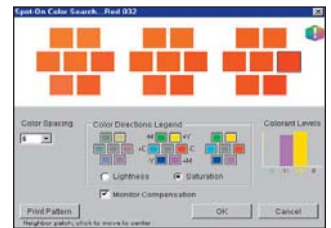


HOT FOLDERS/VIRTUAL PRINTERS (OPTIONAL)

In high-volume workgroups, the optional Hot Folders utility can help **reduce set-up errors** by automating the job submission process. Faster, error-free printing enables users to work beyond their level of expertise, so even complex jobs can be printed with ease.

SPOT-ON® COLOR (OPTIONAL)

Generate the best matches for named colors, create custom spot colors with the optional EFI Spot-On utility. Easily manage color with tools that allow operators to edit CMYK/RGB values associated with existing named colors in order to more closely match the desired named color with expectations for the printed output.



**THE MX SERIES
IT'S A WHOLE
NEW LEVEL
OF PRODUCTIVITY**

MX-5500N/MX-6200N/MX-7000N SPECIFICATIONS

Main Specifications

Base Models	High-speed color multifunction digital document system; 1 GHz multi-tasking controller; 80 GB HDD with document filing; PCL5c/PCL6 network printing/scanning. Scan ² single-pass duplexing feeder, auto duplex, 3,100-sheet standard paper capacity
Functions	Copy, print, network print, network scan, document filing, Sharpdesk™ and fax option ¹
Copy System	Laser, Dry Transfer, Organic Photo Conductor Ultra-Fine Toners/Developers, Magnetic & Heat Process
Copy Size	Input: Min. 5 1/2" x 8 1/2", Max. 11" x 17" Output: Envelopes, Letter, Letter-R, Legal, Ledger & 12" x 18"
Copy Speed	MX-5500N: 55 PPM B/W & 41 PPM Color MX-6200N: 62 PPM B/W & 41 PPM Color MX-7000N: 70 PPM B/W & 41 PPM Color
First Copy Time	Platen glass: 4.5 seconds B&W and 8.4 seconds Color (MX-5500N/MX-6200N) 4.0 seconds B&W and 8.8 seconds Color (MX-7000N)
Warm Up Time	Approximately 360 Seconds
Copy Data	25% to 400% Zoom (1% increments), 25% to 200% (DSPF); 9 R/E presets; 999 Continuous Copy
Scanning	Up to 65 pages/minute with 2-sided B/W originals at standard resolution (includes Fax & Internet-Fax) Up to 35 pages/minute with Color Copy or Scan originals at standard resolution
Original Feeder	Duplex Single Pass; 150-sheet capacity (using 20 lb. bond) Sizes: 5 1/2" x 8 1/2", 8 1/2" x 11", 8 1/2" x 11" R, 8 1/2" x 14", 11" x 17" (13-34 lb. bond)
Paper Feed	Standard: 2,000-sheet drawer (letter) and two adjustable 500-sheet drawers (letter, legal, ledger, 12" x 18", statement size: weights up to 110 index (209 GSM)), 100-sheet bypass tray Optional: 3,500-sheet large capacity tray (letter) or 3,000-sheet large capacity tray (letter, legal, ledger or 12" x 18")
Paper Types	Paper drawers and large capacity tray: 16-28 lb. bond paper Other paper types include plain, pre-printed, recycled, pre-punched, letterhead and color paper.
Bypass Tray	Capacity: 100 sheets (letter, legal, ledger, statement, 12"x18" & envelope size) Categories: Plain paper (16-28 lb. bond 60-105 gsm), Heavy paper (28-68 lb. Bond / 140 Index / 106-256 gsm) Envelope (20-24 lb. bond / Monarch / Com-10), Tab paper (letter only). Other types include label stock, gloss paper, pre-printed, recycled, pre-punched, letterhead, color, and OHP film.
Output Tray	Main output tray (top) 250 sheets (face down)(option); ¹ Standard: Right-side tray 100 sheets (face down)
Duplexing	Standard automatic duplex copying and printing of up to 110 Index
Interface	Ethernet (10/100BaseT), USB 2.0 (host port), USB 2.0 (device port)
Memory	Standard 1 GB (copier memory) 896 MB (printer/network scanning) memory
Hard Disk	80 GB HDD; Document Filing: 40 GB • Main/Custom: Up to 4,200 pages or 3,000 files • Quick Folders: Up to 1,400 pages or 1,000 files
Resolution	Scan: monochrome / color: Max 600 DPI; Copy Output (B&W / Color): Max 600 DPI
Halftone	Equivalent to 256 gradations/2 levels (mono)
Color modes	Auto Color Selection, Full Color, B/W, Dual & Single Color Modes
Copy Features	Scan-once Print-many (Electronic Sorting), Offset-stacking, Auto Color Selection (ACS), Auto Paper Selection (APS), Auto Magnification Selection (AMS), Auto Tray Switching, Rotation Copy, Job Reservation, Tandem Copy, Book Copy, Margin Shift, Tab-paper Insertion, Edge Erase, Center Erase, Dual-page Copy, Cover Pages, Insert Pages, OHP Insertion, Job Build, Card Shot, Mirror Image, B/W Reversal, Centering, Proof Copy, 2-in-1, 4-in-1, Pamphlet, Photo Repeat, Multi-page Enlargement, Document Filing, Account Management, Job Programs, Stamp Mode (Date / Text / Page B&W / Color) ¹
Accounts	Up to 1,000 users. Supports user-number authentication (on device), login name/password (on device) or login name/password (on device via LDAP or other servers)
Firmware	Flash ROM update via USB and/or network
Power Source	AC 100-127 VAC, 60 HZ, 20 Amps
Power	Approx Max: 1.8k; Sleep Mode: 13W Low Power Mode: 262W (MX-5500N), 289W (MX-6200N), 320W (MX-7000N)
Weight	Approx. 463 lbs.
Dimensions	31-5/16"(w) x 28-9/64" (d) x 48-7/32" (h)

1 Some features require optional equipment
2 1,200 DPI and Postscript Printing requires optional PS3 Expansion Kit
3 Actual transmission time will vary based on line conditions.
Based on Sharp Standard Test Chart with approximately 700 characters, letter size in standard resolution
4 Option not available at time of launch

Network Printing System (standard)

Emulation	PCL6 / PCL5c compatible, optional PS3
Resolution	1,200 dpi (monochrome), 600 DPI, 300 DPI ¹
Print Drivers	Windows® 98/ME, 2000, XP, 2003 Server; MAC® OS 9, OSX (including 10.4) PPD only
Software	Print drivers, Printer Status Monitor and Printer Administration Utility
Features	Continuous, Duplex, Pamphlet, N-up, Image Rotation, Different Cover Page/Last Page, Transparency Inserts, Tabs, Carbon-copy Print, Fit-to-page, Poster, Margin Shift, Mirror Image, Watermarks, Overlay, Confidential, Confidential Batch, Release from Hold, Proof, Bypass, Job Priority, Job Control, Tandem and Direct printing (Note: some features not available on certain print drivers) ¹
Direct Printing	File Types: TIFF, JPEG, PCL, TXT, PDF, Encrypted PDF, and PS (PS Expansion Kit required) ² Methods: FTP, Web page, Email and USB memory
Interface	Ethernet; 10/100 BaseT; USB 2.0
OS Support	Windows 98/ME, NT 4.0, XP, 2003 Server. Novell® Netware 3x, 4x, 5x, MAC OS 9, OSX, (including 10.4), Oracle, Citrix, Linux.
Protocols	TCP/IP for Windows and Unix environments including HTTPS, IPPS, FTSP, SNMP(v3), POP3S, SMTPS, IPX/SPX for Novell and Ethertalk for Macintosh® environments
Print Protocols	LPR, IPP, PAP, Raw TCP (port 9100), FTP, Novell Pserver/Rprinter
Security	IP/MAC address filtering, protocol filtering, port management, user authentication and document administration

Network Scanning System (standard)

Scan Output	Resolution: 600, 400, 300, 200 or 100 DPI
Image Formats	Monochrome: TIFF, PDF, Encrypted PDF Color / Grayscale: TIFF, JPG, PDF, Encrypted PDF Internet Fax (option): FIFF-FX, TIFF-F, TIFF-S
Compression	Mono: Uncompressed, G3 (MH), G4(MR/MMR) Color/Grayscale: JPEG (high, middle, low) Internet Fax: MH/MMR (option)
Destinations	Email, Desktop, FTP, Folder (SMB), USB memory, Internet fax (option), Super G3 fax (option)
One-Touch	Up to 999 destinations (combined with scan destinations) and up to 500 Groups
Programs	48 total
Scanning Protocols	TCP/IP (includes SMTP, LDAP, FTP, SMB, SMTPS, POP3S, FTSP)
Security	SSL, Email server user authentication and user account control, comprehensive access control and Email Audit control.
Configuration Method	SSL Web-based management; user/administrator level login security with 32 alpha-numeric characters
Software	Sharpdesk desktop document management software (1 user license) with secure FTPS support

B&W Super G3 Fax Kit (option)

Transmission Data	Super G3, G3 (33.6 KBPS) with JBIG, MMR, MR or MH Compression by sheets fed simplex, duplex or off the glass; Max 400 DPI (ultra-fine) at approximately 2 seconds; JBIG ²
Auto Dialing	Up to 999 destinations (combined with scan destinations) and up to 500 Groups
Inbound Routing	Forwards received fax data to Email
Originals	Up to 31.5" (for transmission)
Programs	48 (combined)
Memory	8 MB (exclusive)
Features	Quick on-line transmission, direct transmission, F-Code transmission/reception, rotate transmission, anti-junk fax reception, automatically staple received faxes, secure fax release, out of paper memory reception, auto redial, 2-in-1 transmission, duplex reception transaction reports, activity reports and PC fax ¹
Security	Secure fax release, junk fax filter and separation between fax lines and network ports.

3-Position Finisher (option)

Type	Console finisher with dual exit trays
Output Capacity	Upper Tray: 1,550 sheets (letter size, non-stapled) Lower Tray: 2,450 sheets (letter size, non-stapled)
Staple Positions	1-point front, 1-point back or 2-point stitching
Output Data for stapling	Face down; 50 sheets (letter) or 30 sheets (mixed sizes) 20 lb. Bond; Maximum: 48 sheets (20 lb. Bond) + 2 cover sheets (140 Index)

Saddle-Stitch Finisher (option)

Type	Console finisher with dual exit trays (mounts on left side of host machine)
Output Trays	Upper tray: Offset stack tray; Lower tray: Book tray for saddle-stitch
Output Capacity	Upper tray hold 1,550 sheets and Lower Tray holds 2,450 sheets (letter size-non stapled)
Output Data for Stapling	Face down, 50 sheets (letter size - 20 lb Bond); face down, 30 sheets (Mixed types/sizes of the same width - 20 lb Bond); Max: 48 sheets 20 lb Bond with 2 covers (140 Index)
Saddle-Stitch	Up to 15 sheets (20 lb Bond); Up to 14 sheets (20 lb Bond) plus one page of 140 Index; Max Sets - 25 bundles (1-5 sheets), 20 bundles (6-10 sheets), 10 bundles (11-15 sheets)
Punching	Optional hole punch unit MX-PNX2B (2 holes/ 3 holes)

Paper Pass Unit (option)

Type	Installed into main unit (required for all output options)
Large Capacity Tray (option 1)	
Type	Large capacity paper feed desk
Paper Size	Letter, Letter-R, Legal, Ledger or 12" x 18"
Capacity	Max 3,000 sheets
Paper Types	Plain paper, pre-printed, recycled up to 110 index (209 GSM)

Large Capacity Tray (option 2)

Type	Large capacity paper feed desk
Paper Size	Letter size
Capacity	Max 3,000 sheets
Paper Types	Plain paper, pre-printed, recycled, letterhead, pre-punched and colored paper up to 110 index (209 GSM)

Punch Unit (option)

Type	Floor style module
Ability	3-hole (portrait), 2-hole (short edge)
Dimensions	4-9/16" (w) x 23-5/8" (d) x 39-3/16" (h)
Weight	17.6 lbs.

Inserter Unit (option)

Type	Floor style module
Productivity	Singles: 36 sheets/minute, Reversed: 25 sheets/minute (letter size)
Capacity	100 sheets (20 lbs Bond)
Dimensions	17-15/16" (w) x 23-7/16" (d) x 41-11/32" (h)
Weight	Approx. 50.7 lbs.

Optional Equipment List

MX-LCX2	Large Capacity Letter Tray
MX-LCX3	Large Capacity Ledger Tray
MX-FNX3	Finisher (three-position stapling, 4,000-sheet stacking)
MX-FNX4	Saddle-stitch Finisher (three-position stapling, saddle-stapled, 4,000-sheet stacking)
MX-PNX2B	Hole Punch Unit (requires MX-FNX3, MX-FNX4)
MX-PEX2	Fiery Controller (includes PostScript 3) ¹
MX-RBX2	Paper Pass Unit (required for MX-FNX3, MX-FNX4)
MX-CFX1	Inserter (requires MX-PNX2B with MX-FNX3)
MX-PXK1	PostScript 3 Kit
MX-FWX1	Internet Fax Expansion Kit
MX-FXK1	Facsimile Expansion Kit
MX-AMX1	Application Integration Module
MX-AMX2	Application Communication Kit ¹
MX-AMX3	External Accounting Kit ¹
MX-FRX3U	Data Security Kit ¹
AR-PF1	Bar Code Font
MX-USX5	Sharpdesk - 5 User License Kit

Supplies

MX-70NTBA	Black Toner Cartridge
MX-70NTCA	Cyan Toner Cartridge
MX-70NTMA	Magenta Toner Cartridge
MX-70NTYA	Yellow Toner Cartridge
MX-70NVBA	Black Developer
MX-70NVSA	Cyan/Magenta/Yellow Developer
MX-70NRBA	Black OPC Drum
MX-27NRSA	OPC Drum for Cyan/Magenta/Yellow



"IT Friendliness" Award



As an ENERGY STAR® Partner, Sharp has determined that this product meets the ENERGY STAR® guidelines for energy efficiency.



SHARP ELECTRONICS CORPORATION
Sharp Plaza
Mahwah, NJ 07430-1163
1-800-BE-SHARP
www.sharpsusa.com

Design and specifications subject to change without notice.
Sharp is a registered trademark of Sharp Corporation.
All other trademarks and registered trademarks are property of their respective holders.